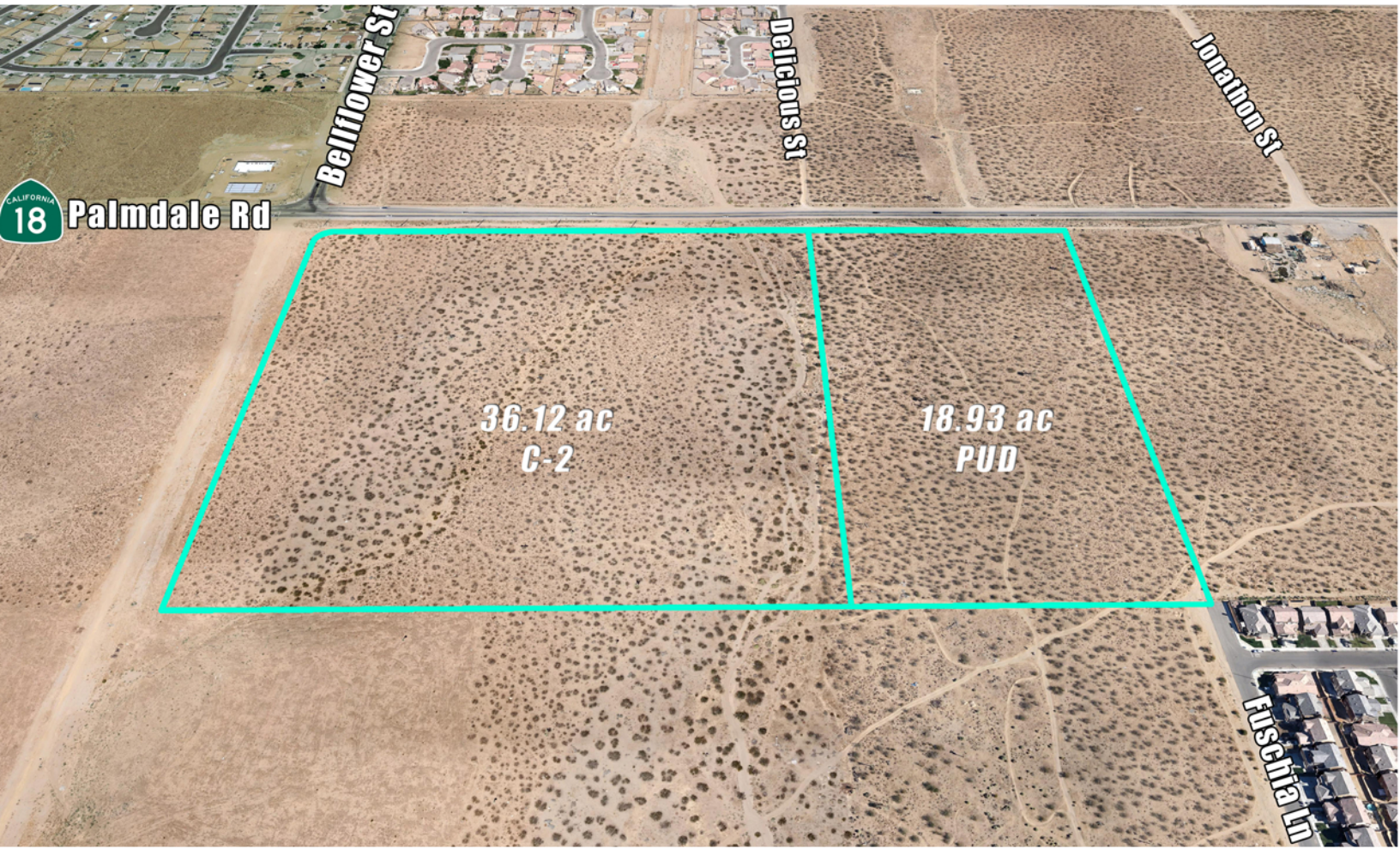


FOR SALE

55 AC HWY 18

VICTORVILLE, CA



55.05 ac Commercial & PUD Land

- Located at major intersection of Hwy 18 (Palmdale Rd) & Bellflower St
- Highway 18 sees almost 30,000 cars per day
- 36.12 ac parcel zoned Commercial
- 18.93 ac parcel zoned PUD
- Over 6,000 homes in a 1.5 mile radius

ASKING \$5,500,000

JOSHUA TATE DRE# 01959479 760-617-7384

Majestic Land

powered by Diamond V Investments Co ~ DRE# 01342463